

IDEE PROGETTUALI SULL'UTILIZZO DELL'AREA



COME ATTUARLE RISPETTANDO E SOSTENENDO L'AMBIENTE CON ZERO IMPATTO AMBIENTALE ED ECONOMICO

- RIUTILIZZARE IL PIU' POSSIBILE LE STRUTTURE ESISTENTI: vasca circolare fuori terra → Teatro/cinema/giochi
- RIUTILIZZARE LE MACERIE DELLA DEMOLIZIONE: vasche ex depuratore → Pavimentazione/arredo/sottosuolo
- FAVORIRE IL REINSEDIAMENTO DELLA FLORA E DELLA FAUNA TIPICA DELLA ZONA:



giaggiolo



fiordaliso



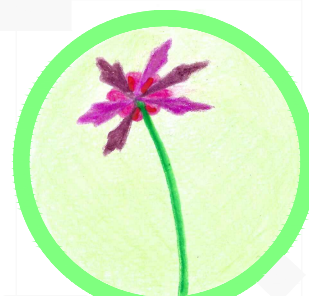
temolo



campanula bienne



listera maggiore



fior di cuculo



salice bianco



rosa selvatica



cardo di palude



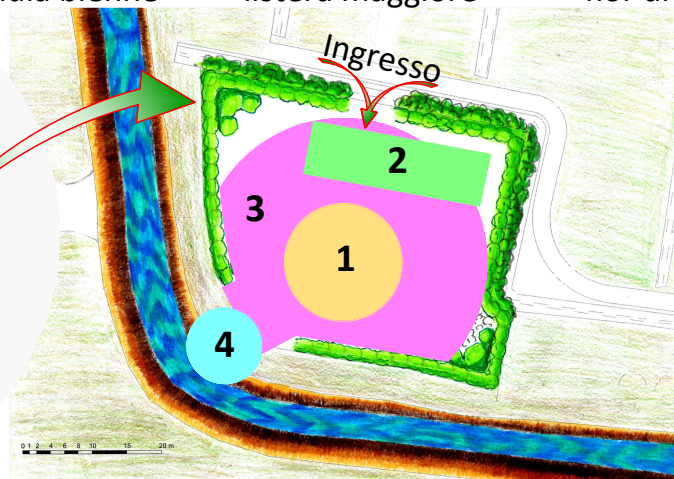
frangola



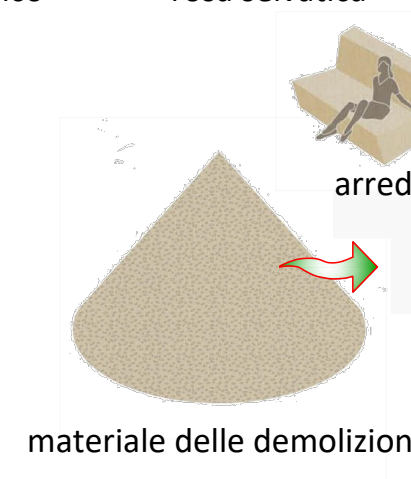
lagerstroemia



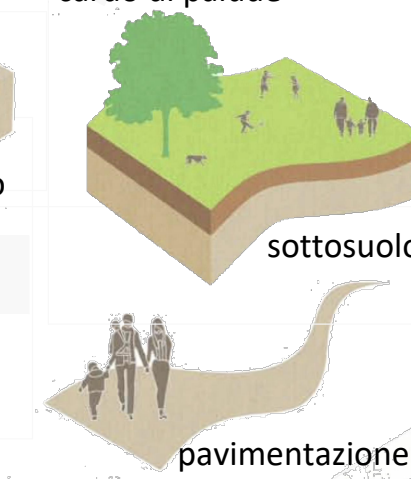
siepe ligustre "esistente"



riuso delle macerie

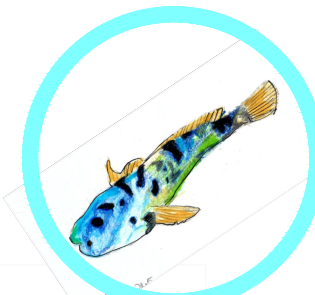


materiale delle demolizioni

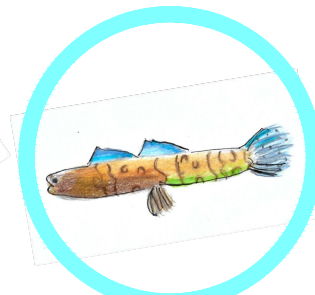


sottosuolo

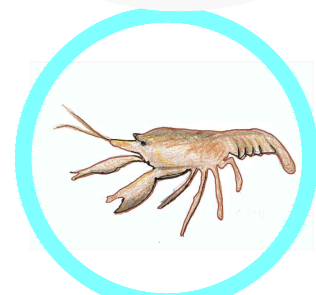
pavimentazione



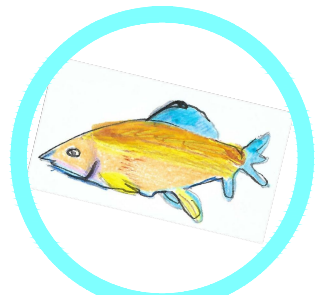
scazzone



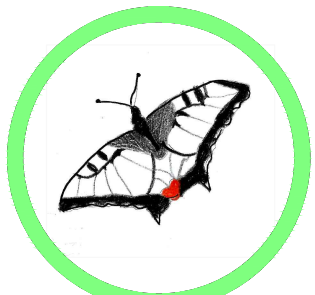
panzarolo



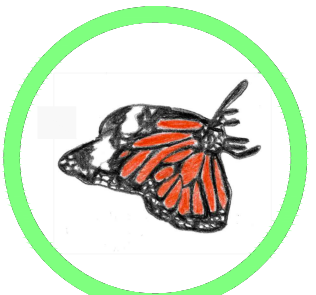
gambero di fiume



temolo



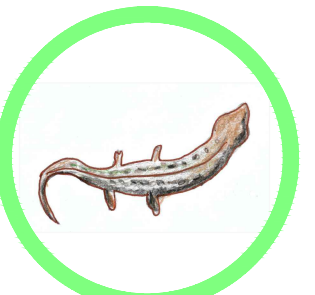
farfalla macone



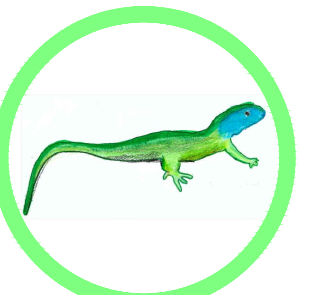
farfalla della tigre



rana latastei



lucertola vivipera



ramarro

PARCO ARENA